

ROBOT-EYE **SX-910**

SX-910 can monitor a machine with two cameras

■ Specifications SX-910

Resolution	1360×1040pixels*
Processing time	Min.0.015sec.
Ambient Humidity	0 ~ 45℃
Power	DC24V
Power consumption	24VA / 24W
External dimensions	10.9"(L)/8.5"(W)/2.0"(H)/277×215×50 m/m
Weight	2.8lbs. / 1.25kg

*Available for VGA (640×480)

■ Compositions

Standard system	SX-910 (One camera)	SX-910TW (Two cameras)
Main unit (build in 10.4" LCD monitor) ①	1	1
CCD camera with 16mm lens ②	1	2
Halogen lamp with stand ③	1	2
I/F cable 6feet / 2m ④	1	1
Camera cable 15feet / 5m ⑤	1	2
I/O cable 15feet / 5m ⑥	1	1



Standard compositions

Option
8mm focal length ⑦
12mm focal length ⑧
25mm focal length ⑨
35mm focal length ⑩
50mm focal length ⑪
Other wide-angle / narrow-angle lenses, zoom lenses
LED Lamp (with stand) ⑫
Infrared Lamp (with stand) ⑬



Wide / Narrow optic angle lens



Lamp/Stand

The contents of this catalogue might be revised without any notice.

The Vision System for Mold Protection
ROBOT-EYE
SX-910



**Suitable for Precision molding, Multi-cavity molding,
Insert injection molding**

Easy
operation

High speed
processing

Stable
operation

Save
NG image

High
resolution
CCD

SIGMAX
www.robot-eye.co.jp

SIGMAX

SIGMAX CO., LTD.

Sankyo Yokohama Bldg.
5-85, Choja-machi, naka-ku,
Yokohama 231-0033 Japan.
Tel. 045-264-2661 Fax. 045-264-2660
www.robot-eye.co.jp/english/ info@robot-eye.co.jp



This catalogue is used vegetable oil ink and recycled paper to economize on natural resource.

ROBOT-EYE protects your valuable mold

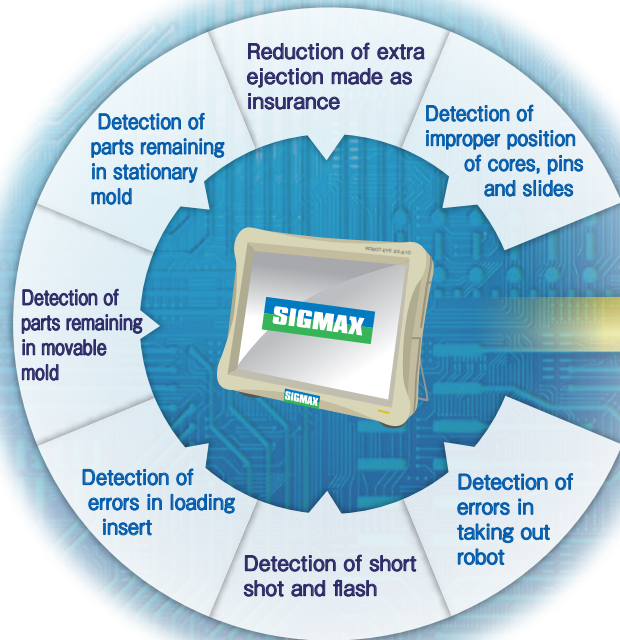


SX-910 is debuted by reflected customer requirement and further evolution.

SX-910 is the vision system for mold protection with high resolution touch panel on 10.4 inch LCD monitor which is purpose for easy operation, high speed treatment, stability operation and monitoring accuracy. So it can be available to take more clear picture.

In addition, SX-910 is achieved stability watch by evolved original sensitivity method. Please try to use evolved our latest model SX-910 because the function is full loading.

Applications



Merits of using Robot-eye

Prevent mold damage
(eliminate downtime and cost for repair)

Increase productivity through monitoring

Maintain quality of products detecting defects

Features



High resolution 10.4 inch monitor
(available for high resolution camera)



Easy operation on the touch panel



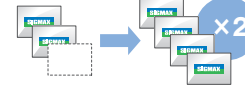
Loading with USB slot

Select from 6-Languages

運行記録	Log
金型データ管理	Manage mold data
Japanese	English
运行记录	운행기록
模具数据管理	금형데이터관리
Chinese	Korean
运行记录	Đi lại vận hành
USVatSocanhuu	Đi lại vận hành
Thai	Vietnamese

Functions

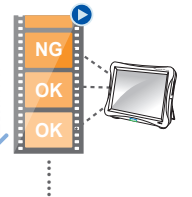
High speed processing (more than 2times processing speed to compare with existing model)



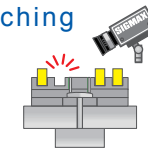
Reset by safety door open and close (under Automatic /Manual)



Save NG movie data



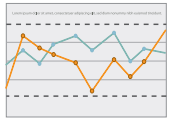
Insert watching is easy by our original watching method.



Area setting (max. area 128)

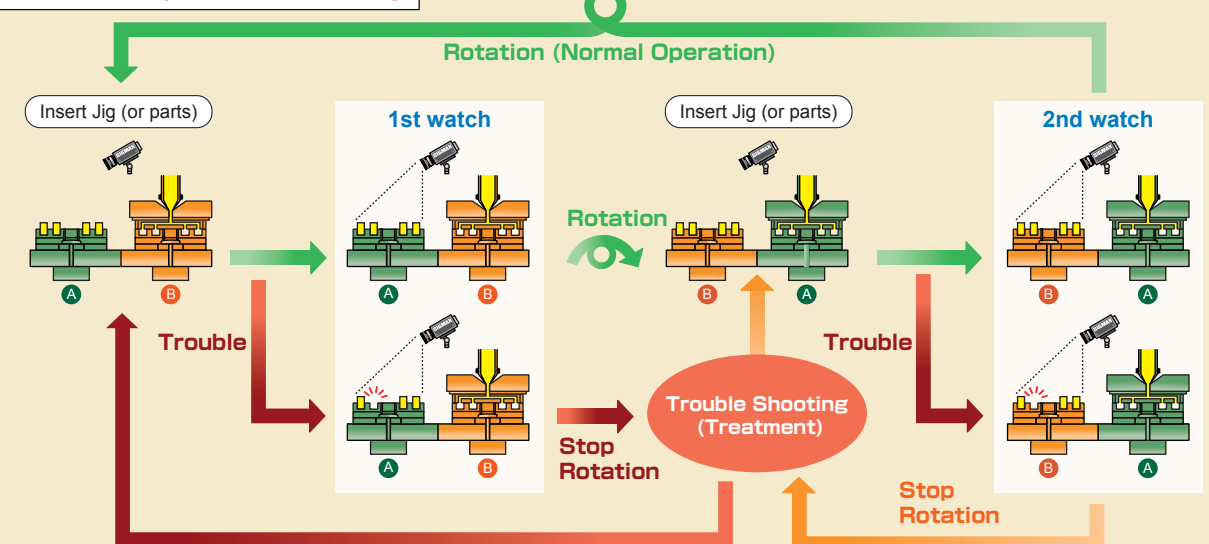


Log data function (by graph, thumbnail)

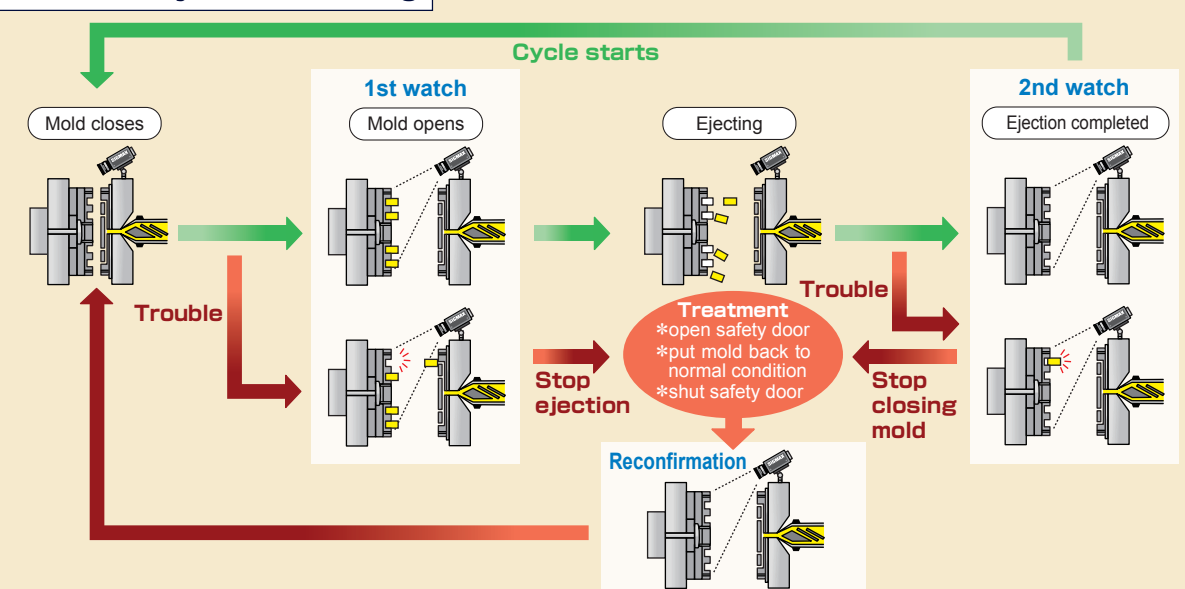


Monitoring process

Vertical injection molding



Horizontal Injection molding



More detail on Web The monitoring process can be checked on video of HP. >> www.robot-eye.co.jp/english/robo2